



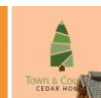
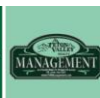
**“Local Brokerage, National Results.”**

## Maps & Documents

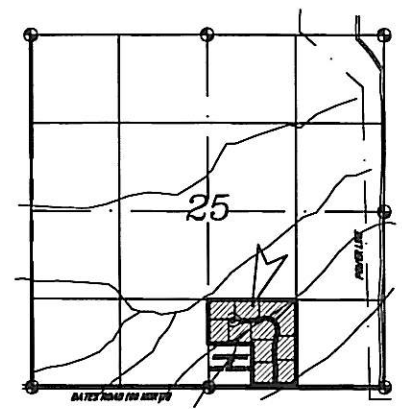
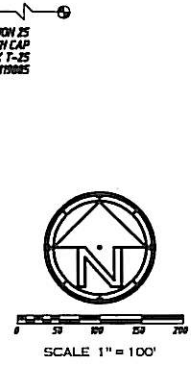
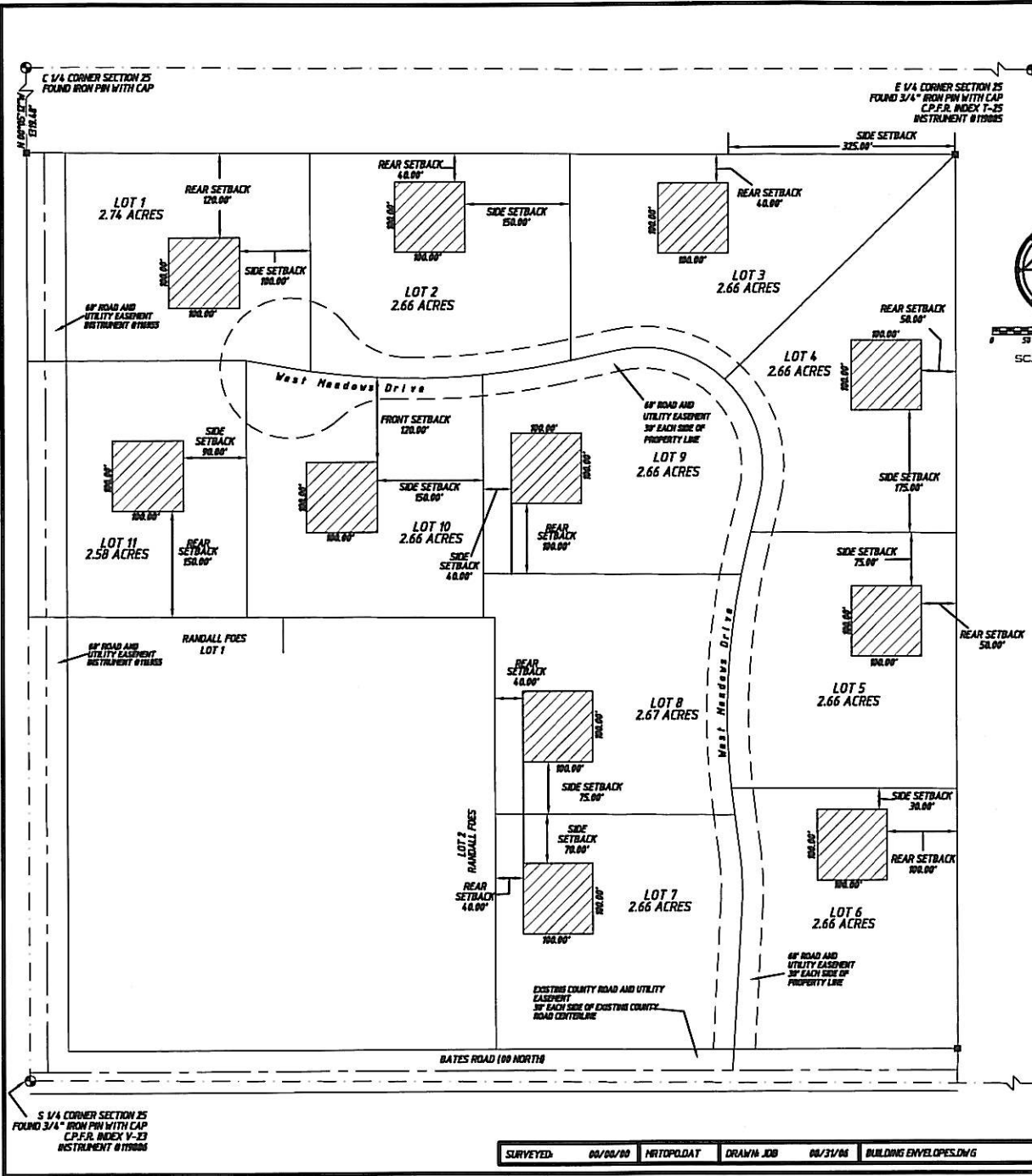
Teton Valley Realty or this website makes no representation regarding sufficiency, completeness, or any other matters referred to any documents herein, or information provided on this web site. Teton Valley Realty advises you consult with independent legal counsel regarding these documents. When purchasing real estate, it is advised that you obtain full and complete documents, and not rely on these pages.

Phone: 208.354.2439  
Email : [info@tetonvalleyrealty.com](mailto:info@tetonvalleyrealty.com)

253 S. Main St. Box 604, Driggs ID 83422  
57 S Main St. # 210 Victor, ID 83455



E:\AN\DATA\2004-10\Surf\Building Envelopes.dwg 9/27/2006 1:52:48 PM MDT



LEGEND	
	SECTION CORNER FOUND OR SET AS NOTED
	FOUND 1/16 CORNER - 5/8" IRON PIN WITH CAP INSCRIBED - AM ENR 2008
	SECTIONAL BREAKDOWN LINE
	EASEMENT - TYPE AND WIDTH AS NOTED
	BUILDING ENVELOPE

BUILDING ENVELOPE PLAT	
<b>WEST MEADOWS SUBDIVISION</b>	
THE SW 1/4 SE 1/4 SECTION 25, TWP. 5N., RANG. 44E., B.M., TETON COUNTY, IDAHO	
MARK ROCKEFELLER 40 NORTH MAIN STREET DRIGGS, IDAHO 83422 (208) 354-2439	255 South Main P.O. Box 139 Victor, Idaho 83453 (208) 767-2932 <a href="mailto:aw@netnet.com">aw@netnet.com</a>
SURVEYED: 06/06/00    NRTOP.DAT    DRAWN: JDB    06/31/06    BUILDING ENVELOPES.DWG    REVISED: JDB    09/27/06	PROJECT NO. 2004 - 192    SECTION 25

S 1/4 CORNER SECTION 25  
FOUND 3/4" IRON PIN WITH CAP  
C.P.F.R. INDEX V-23  
INSTRUMENT #17908

SE 1/4 CORNER SECTION 25  
FOUND 5/8" IRON PIN WITH CAP  
C.P.F.R. INDEX V-115-43  
INSTRUMENT #17899

THE SW 1/4 SE 1/4 SECTION 25, TWP. 5N., RANG. 44E.,  
B.M., TETON COUNTY, IDAHO

SURVEYED: 06/06/00    NRTOP.DAT    DRAWN: JDB    06/31/06    BUILDING ENVELOPES.DWG    REVISED: JDB    09/27/06

PROJECT NO. 2004 - 192    SECTION 25