



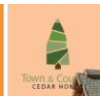
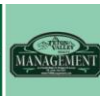
**“Local Brokerage, National Results.”**

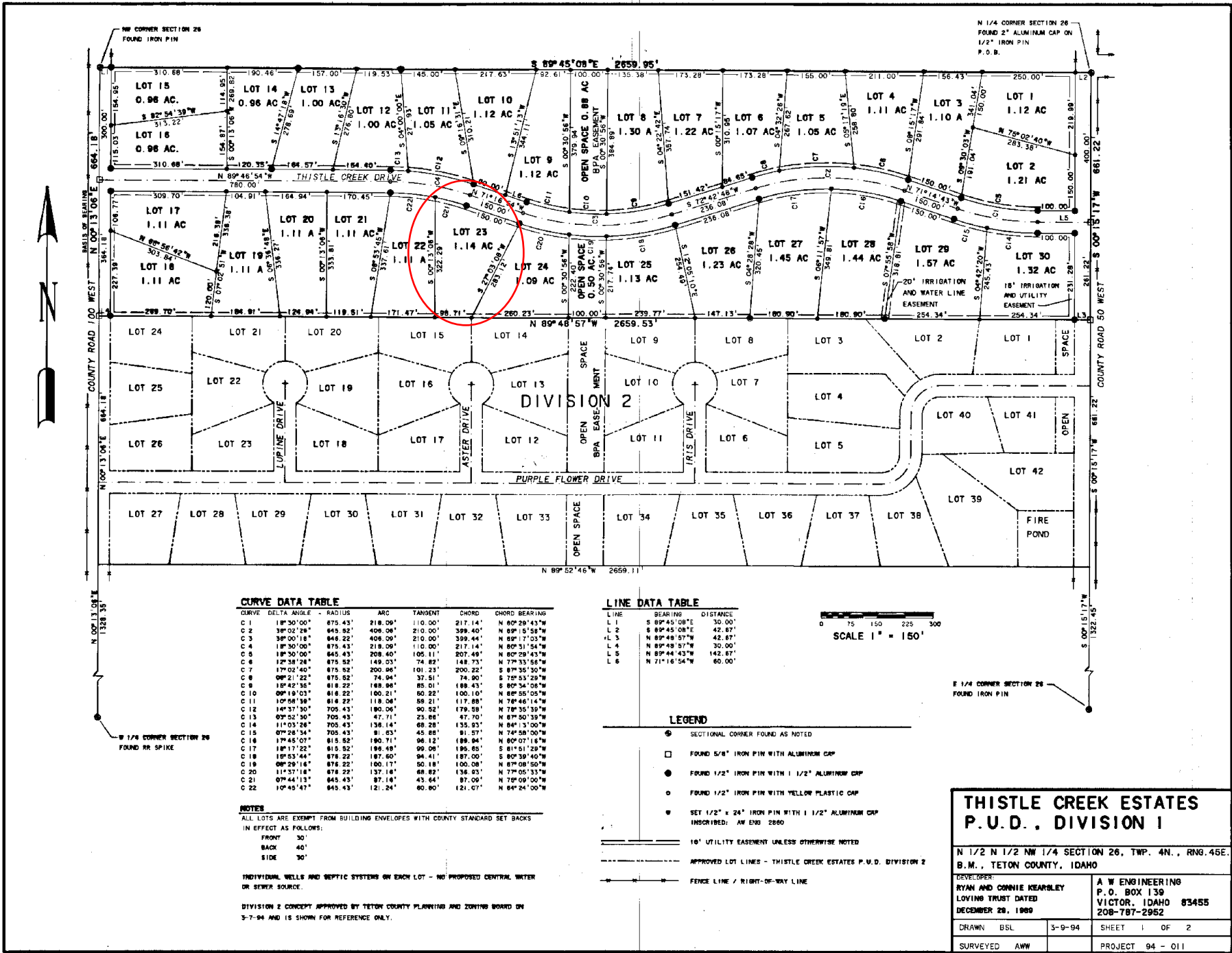
## Maps & Documents

Teton Valley Realty or this website makes no representation regarding sufficiency, completeness, or any other matters referred to any documents herein, or information provided on this web site. Teton Valley Realty advises you consult with independent legal counsel regarding these documents. When purchasing real estate, it is advised that you obtain full and complete documents, and not rely on these pages.

Phone: 208.354.2439  
Email : [info@tetonvalleyrealty.com](mailto:info@tetonvalleyrealty.com)

253 S. Main St. Box 604, Driggs ID 83422  
57 S Main St. # 210 Victor, ID 83455





**CURVE DATA TABLE**

CURVE	DELTA ANGLE	RADIUS	ARC	TANGENT	CHORD	CHORD BEARING
C 1	18°30'00"	875.43'	218.09'	110.00'	217.14'	N 80°29'43"W
C 2	38°02'28"	645.92'	406.08'	210.00'	399.40'	N 89°15'58"W
C 3	38°00'18"	646.22'	406.09'	210.00'	399.44'	N 89°17'03"W
C 4	18°30'00"	875.43'	218.09'	110.00'	217.14'	N 80°31'54"W
C 5	18°30'00"	645.43'	208.40'	105.11'	207.49'	N 80°29'43"W
C 6	12°38'28"	875.50'	149.03'	74.82'	148.73'	N 79°33'56"W
C 7	17°02'40"	875.52'	200.96'	101.23'	200.22'	S 87°35'30"W
C 8	09°21'22"	875.52'	74.94'	37.51'	74.90'	S 75°53'29"W
C 9	18°42'35"	618.22'	188.80'	85.01'	188.43'	S 80°34'05"W
C 10	09°19'03"	618.22'	100.21'	50.22'	100.10'	N 88°55'05"W
C 11	10°58'38"	618.22'	118.06'	58.21'	117.88'	N 78°46'14"W
C 12	14°37'30"	705.43'	190.06'	90.52'	179.59'	N 78°35'30"W
C 13	03°52'30"	705.43'	47.71'	23.86'	47.70'	N 87°50'39"W
C 14	11°03'28"	705.43'	136.14'	68.28'	135.53'	N 84°13'00"W
C 15	07°28'34"	705.43'	91.03'	45.89'	91.57'	N 74°58'00"W
C 16	17°45'07"	615.52'	180.71'	96.12'	189.94'	N 80°07'16"W
C 17	18°17'22"	615.52'	196.49'	99.08'	195.65'	S 81°51'29"W
C 18	18°53'44"	878.22'	187.60'	94.41'	187.00'	S 80°39'40"W
C 19	08°29'18"	878.22'	160.17'	80.18'	160.08'	N 87°08'50"W
C 20	11°37'18"	878.22'	137.18'	68.15'	136.83'	N 77°05'33"W
C 21	07°44'13"	845.43'	87.16'	43.64'	87.09'	N 75°09'00"W
C 22	10°45'47"	845.43'	121.24'	60.80'	121.07'	N 84°24'00"W

**NOTES**

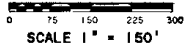
ALL LOTS ARE EXEMPT FROM BUILDING ENVELOPES WITH COUNTY STANDARD SET BACKS IN EFFECT AS FOLLOWS:  
 FRONT 30'  
 BACK 40'  
 SIDE 30'

INDIVIDUAL WELLS AND SEPTIC SYSTEMS ON EACH LOT - NO PROPOSED CENTRAL WATER OR SEWER SOURCE.

DIVISION 2 CONCEPT APPROVED BY TETON COUNTY PLANNING AND ZONING BOARD ON 3-7-94 AND IS SHOWN FOR REFERENCE ONLY.

**LINE DATA TABLE**

LINE	BEARING	DISTANCE
L 1	S 89°45'08"E	30.00'
L 2	S 89°45'08"E	42.87'
L 3	N 89°48'57"W	42.87'
L 4	N 89°48'57"W	30.00'
L 5	N 89°44'43"W	142.87'
L 6	N 71°16'54"W	60.00'



**LEGEND**

- SECTIONAL CORNER FOUND AS NOTED
- FOUND 5/8" IRON PIN WITH ALUMINUM CAP
- FOUND 1/2" IRON PIN WITH 1 1/2" ALUMINUM CAP
- FOUND 1/2" IRON PIN WITH YELLOW PLASTIC CAP
- ⊙ SET 1/2" x 24" IRON PIN WITH 1 1/2" ALUMINUM CAP INSCRIBED: AW ENG 2860
- 10' UTILITY EASEMENT UNLESS OTHERWISE NOTED
- APPROVED LOT LINES - THISTLE CREEK ESTATES P.U.D. DIVISION 2
- FENCE LINE / RIGHT-OF-WAY LINE

**THISTLE CREEK ESTATES  
P.U.D., DIVISION 1**

N 1/2 N 1/2 NW 1/4 SECTION 26, TWP. 4N., RNG. 45E.  
B.M., TETON COUNTY, IDAHO

DEVELOPER: RYAN AND CONNIE KEARBLEY LOVING TRUST DATED DECEMBER 28, 1980		A W ENGINEERING P.O. BOX 139 VICTOR, IDAHO 83455 208-787-2952	
DRAWN BSL	3-9-94	SHEET 1	OF 2
SURVEYED AWW		PROJECT 94 - 011	