



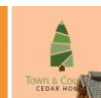
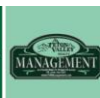
**“Local Brokerage, National Results.”**

## Maps & Documents

Teton Valley Realty or this website makes no representation regarding sufficiency, completeness, or any other matters referred to any documents herein, or information provided on this web site. Teton Valley Realty advises you consult with independent legal counsel regarding these documents. When purchasing real estate, it is advised that you obtain full and complete documents, and not rely on these pages.

Phone: 208.354.2439  
Email : [info@tetonvalleyrealty.com](mailto:info@tetonvalleyrealty.com)

253 S. Main St. Box 604, Driggs ID 83422  
57 S Main St. # 210 Victor, ID 83455



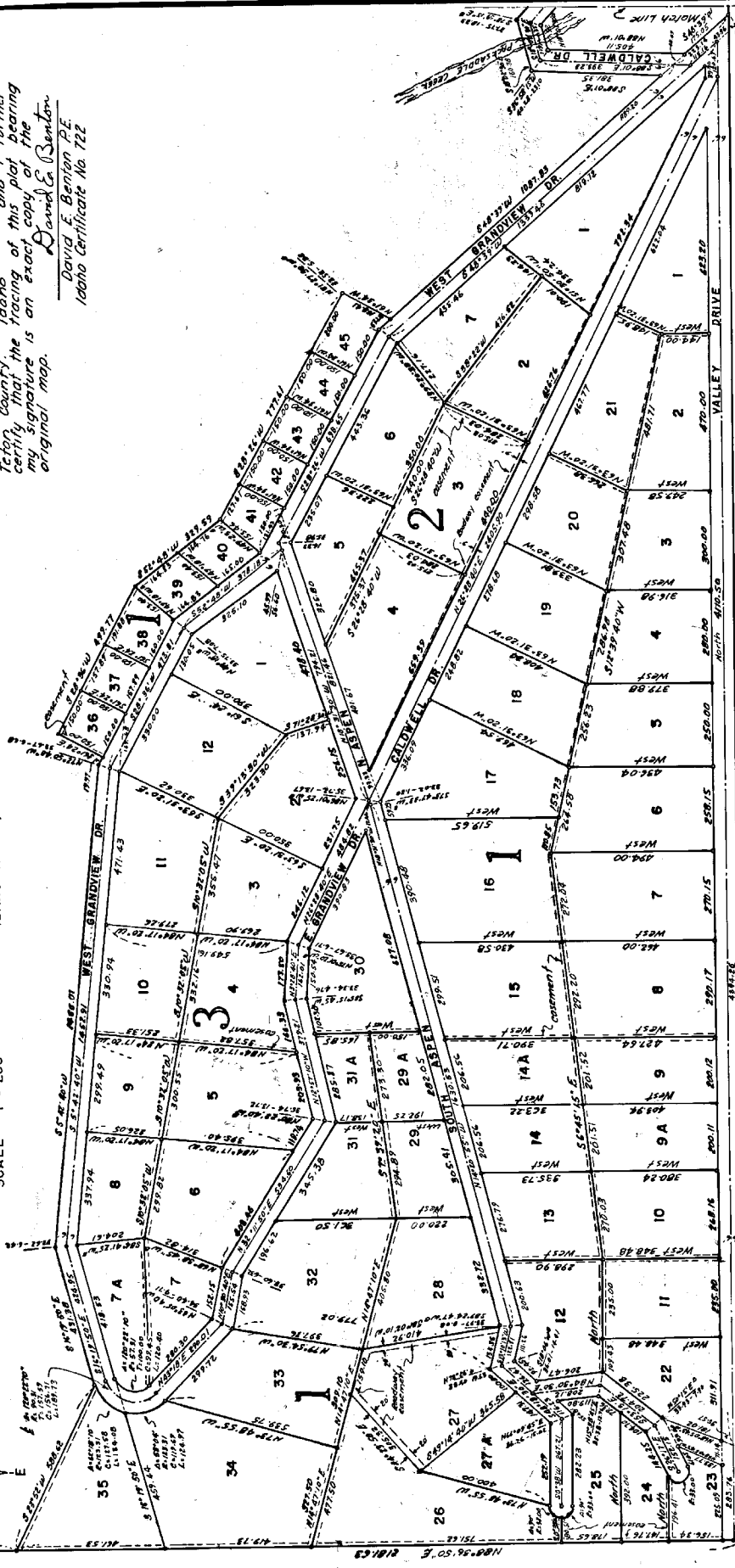
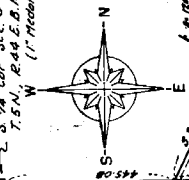
# PACKSADDLE CREEK ESTATES

## DIVISION NO. 1 - TETON COUNTY, IDAHO

PART OF EAST 1/2 SEC. 8, T.5N., R.44E.B.M.

DAVID E. BENTON & ASSOCIATES - CONSULTING ENGINEERS  
IDAHO FALLS, IDAHO

SCALE 1" = 200'



**ENGINEER'S CERTIFICATE**  
I, David E. Benton, a registered Professional Engineer do hereby certify that at the request of the owners, this plat showing the tract of land shown on the subdivided tract of land into blocks, lots and streets to be known as Packsaddle Creek Estates, Division No. 1, Teton, Idaho, that the tracing of this plat bearing my signature is an exact copy of the original map.  
*David E. Benton*  
David E. Benton P.E.  
Idaho Certificate No. 722

**RECORDER'S CERTIFICATE NO. 48614**  
State of Idaho, County of Teton, I hereby certify that this Plat was filed at 10:50 a.m. in Book of Plats on page of the County Recorder's Office, Teton County, Idaho, and I further certify that the tracing on this plat bearing my signature is an exact copy of the original map.  
*John E. Adams*  
County Recorder  
By *Oliver B. Swinson*  
Deputy Recorder

**COUNTY APPROVAL AND ACCEPTANCE**  
Presented to the Teton County Board of Commissioners this 10th day of Aug, A.D. 1972, at which time this Subdivision was approved and accepted.  
*Alverson H. James* Chairman  
*Oliver B. Swinson* Deputy Recorder

Note: All measurements 8 feet thru each lot unless shown otherwise.

S.E. Cor. Sec. 8  
T.5N., R.44E.B.M.  
(Steel Aisle)

North 4897.13

4897.13

4897.13

4897.13

4897.13

4897.13

4897.13

4897.13

4897.13

4897.13

4897.13

4897.13

4897.13

4897.13

4897.13

4897.13

4897.13

4897.13

4897.13

4897.13

