



**“Local Brokerage, National Results.”**

## Maps & Documents

Teton Valley Realty or this website makes no representation regarding sufficiency, completeness, or any other matters referred to any documents herein, or information provided on this web site. Teton Valley Realty advises you consult with independent legal counsel regarding these documents. When purchasing real estate, it is advised that you obtain full and complete documents, and not rely on these pages.

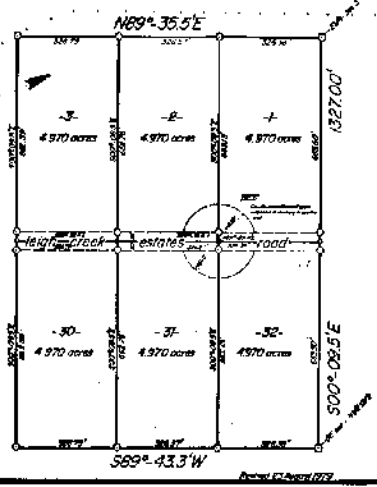
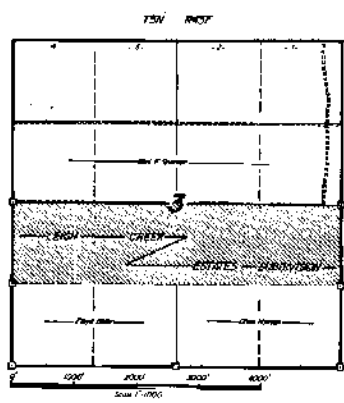
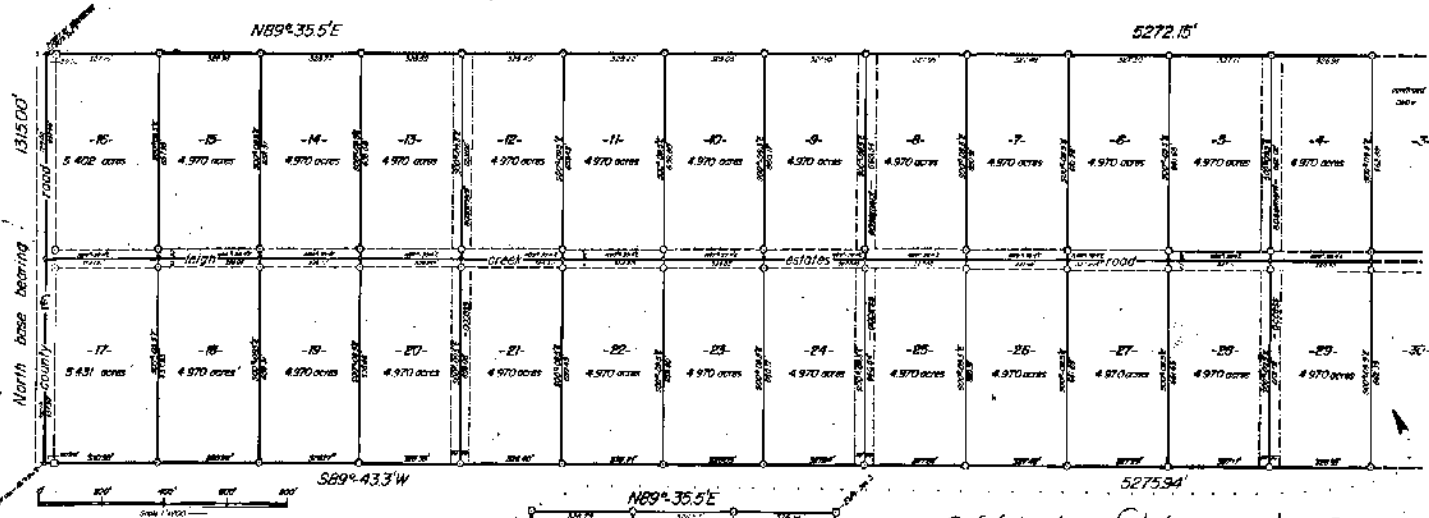
Phone: 208.354.2439  
Email : [info@tetonvalleyrealty.com](mailto:info@tetonvalleyrealty.com)

253 S. Main St. Box 604, Driggs ID 83422  
57 S Main St. # 210 Victor, ID 83455



Affidavits # 84972

# LEIGH CREEK ESTATES SUBDIVISION



*Affidavits filed as Inst # 84972*

DEVELOPER ----- Leigh Creek Corporation  
 Box 814 Jackson, Wyoming 83001

SURVEYOR ----- Paul N. Scherbel  
 Big Piney, Star Valley, and Jackson, Wyoming

DATE ----- June 1979

## LEIGH CREEK ESTATES SUBDIVISION

Identical with the  
**NI/2SI/2 SECTION 3**  
**T5N R45E**  
 Teton County, Idaho  
 Sheet 2 of 2

Scale 80 ft = 1" as shown  
 Drawn by the Mapping SURVEYOR GENERAL, LTD