



**“Local Brokerage, National Results.”**

## Maps & Documents

Teton Valley Realty or this website makes no representation regarding sufficiency, completeness, or any other matters referred to any documents herein, or information provided on this web site. Teton Valley Realty advises you consult with independent legal counsel regarding these documents. When purchasing real estate, it is advised that you obtain full and complete documents, and not rely on these pages.

Phone: 208.354.2439  
Email : [info@tetonvalleyrealty.com](mailto:info@tetonvalleyrealty.com)

253 S. Main St. Box 604, Driggs ID 83422  
57 S Main St. # 210 Victor, ID 83455



**GENERAL AND PARTICULARS**

DIVISION NO. 1

TEIHO COUNTY, IDAHO

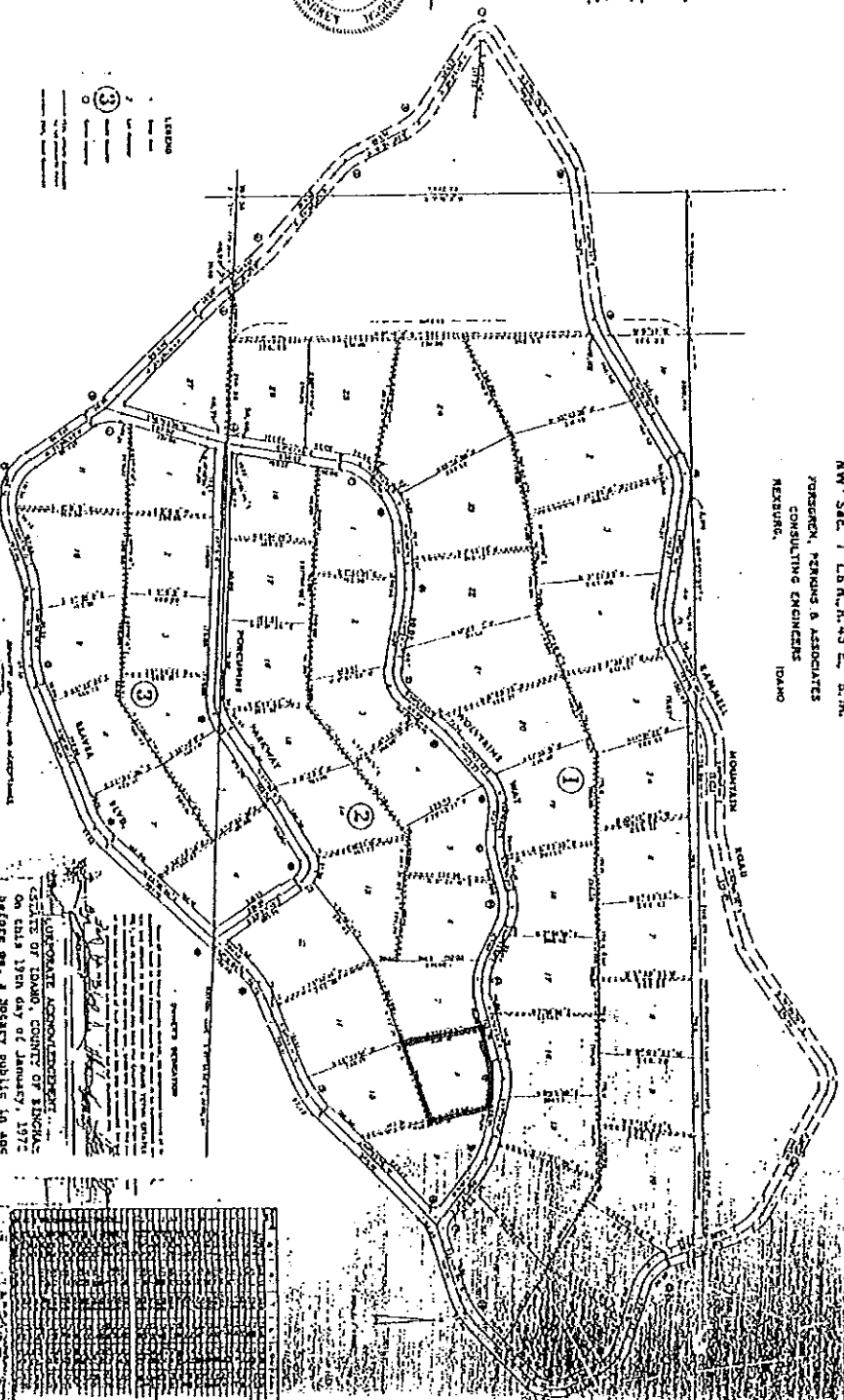
PART OF

SW<sup>1</sup> Sec 36 T7N, R. 45 E., S. 11 M.  
NW<sup>1</sup> Sec. 1 T5N, R. 45 E., S. 11 M.

JORGENSEN, PETERSEN & ASSOCIATES  
CONSULTING ENGINEERS  
IDAHO  
REBURG,



Survey of a certain tract of land in the County of Teiho, State of Idaho, containing approximately 100 acres, more or less, as shown on the attached map, and the same is being surveyed for the purpose of dividing the same into lots for the purpose of sale to the public.



- LEGEND
- 1. Section
  - 2. Township
  - 3. Range
  - 4. Meridian
  - 5. Section
  - 6. Township
  - 7. Range
  - 8. Meridian

5776 2/11/12  
County of Teiho  
Filed at the Request of  
John Clark  
409-12-1922 2:05 P.M.  
Langell B. Brown  
Recorder

**CORPORATE ACKNOWLEDGMENT**  
STATE OF IDAHO, COUNTY OF BINGHAM.  
On this 12th day of January, 1922, before me, a Notary Public in and for said State, personally appear JOHN F. CLARKE, President, and K. F. CLARKE, Secretary, known to me to be the President and Secretary of a corporation that executed this Declaration on behalf of said corporation, and acknowledged to me such corporation executed the said Declaration.

*John F. Clarke*  
*K. F. Clarke*

Notary Public for the 5th Idaho Assisting at Shoshone