



“Local Brokerage, National Results.”

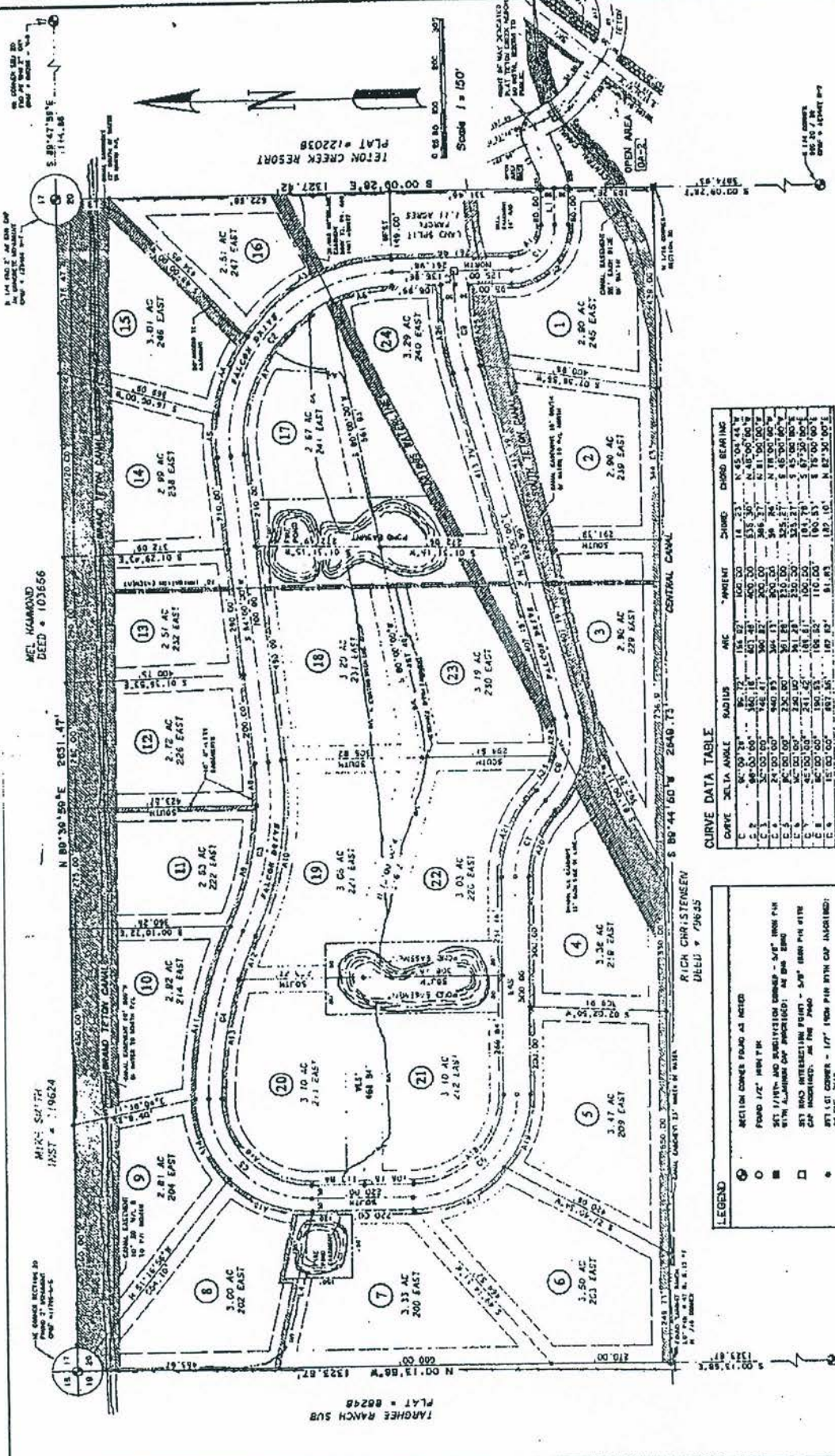
Maps & Documents

Teton Valley Realty or this website makes no representation regarding sufficiency, completeness, or any other matters referred to any documents herein, or information provided on this web site. Teton Valley Realty advises you consult with independent legal counsel regarding these documents. When purchasing real estate, it is advised that you obtain full and complete documents, and not rely on these pages.

Phone: 208.354.2439
Email : info@tetonvalleyrealty.com

253 S. Main St. Box 604, Driggs ID 83422
57 S Main St. # 210 Victor, ID 83455





#125017

FINAL PLAN FOR:

FALCON CREEK SUBDIVISION

THE N 1/2 NW 1/4 SECTION 20, TWP. 6N., R9E., 46E.,
B.M., TETON COUNTY, IDAHO

PREPARED BY:
AV ENGINEERING
P.O. BOX 139
VICTOR, IDAHO 83455
(208) 767-2952

DATE: 11/17/06
PROJECT: DS - 106
SHEET 1 OF 2
SURVEYED: 10/19/06
P-12/95
FALCON, BCD
SECTION 20

MEL HAMMOND
DEED # 103656

MICHAEL SMITH
DEED # 119624

RICH CHRISTENSEN
DEED # 75625

CURVE DATA TABLE

CURVE	DELTA ANGLE	RADIUS	ARC	ARC LENGTH	CHORD BEARING
C 1	154.23°	150.00'	154.23'	154.23'	N 45.00° 45' W
C 2	142.42°	200.00'	142.42'	142.42'	N 45.00° 45' W
C 3	160.27°	150.00'	160.27'	160.27'	N 45.00° 45' W
C 4	160.27°	150.00'	160.27'	160.27'	N 45.00° 45' W
C 5	160.27°	150.00'	160.27'	160.27'	N 45.00° 45' W
C 6	160.27°	150.00'	160.27'	160.27'	N 45.00° 45' W
C 7	160.27°	150.00'	160.27'	160.27'	N 45.00° 45' W
C 8	160.27°	150.00'	160.27'	160.27'	N 45.00° 45' W
C 9	160.27°	150.00'	160.27'	160.27'	N 45.00° 45' W
C 10	160.27°	150.00'	160.27'	160.27'	N 45.00° 45' W
C 11	160.27°	150.00'	160.27'	160.27'	N 45.00° 45' W
C 12	160.27°	150.00'	160.27'	160.27'	N 45.00° 45' W
C 13	160.27°	150.00'	160.27'	160.27'	N 45.00° 45' W
C 14	160.27°	150.00'	160.27'	160.27'	N 45.00° 45' W
C 15	160.27°	150.00'	160.27'	160.27'	N 45.00° 45' W
C 16	160.27°	150.00'	160.27'	160.27'	N 45.00° 45' W
C 17	160.27°	150.00'	160.27'	160.27'	N 45.00° 45' W
C 18	160.27°	150.00'	160.27'	160.27'	N 45.00° 45' W
C 19	160.27°	150.00'	160.27'	160.27'	N 45.00° 45' W
C 20	160.27°	150.00'	160.27'	160.27'	N 45.00° 45' W

ARC DATA TABLE

ARC	ARC LENGTH	ARC	ARC LENGTH
A 1	154.23'	A 1	154.23'
A 2	142.42'	A 2	142.42'
A 3	160.27'	A 3	160.27'
A 4	160.27'	A 4	160.27'
A 5	160.27'	A 5	160.27'
A 6	160.27'	A 6	160.27'
A 7	160.27'	A 7	160.27'
A 8	160.27'	A 8	160.27'
A 9	160.27'	A 9	160.27'
A 10	160.27'	A 10	160.27'
A 11	160.27'	A 11	160.27'
A 12	160.27'	A 12	160.27'
A 13	160.27'	A 13	160.27'
A 14	160.27'	A 14	160.27'
A 15	160.27'	A 15	160.27'
A 16	160.27'	A 16	160.27'
A 17	160.27'	A 17	160.27'
A 18	160.27'	A 18	160.27'
A 19	160.27'	A 19	160.27'
A 20	160.27'	A 20	160.27'

LINE DATA TABLE

LINE	BEARING	DISTANCE
L 1	S 89° 47' 59" E	80.00'
L 2	S 89° 47' 59" E	80.00'
L 3	S 89° 47' 59" E	80.00'
L 4	S 89° 47' 59" E	80.00'

LEGEND

- 1 SECTION CORNER FOUND AS NOTED
- 2 FOUND 1/2" IRON PIPER
- 3 SET 1/2" AND SURVEYOR CORNER - 5/8" IRON PIPER WITH ALUMINUM CAP PROVIDED; SEE DEED 80248
- 4 SET BRASS INTERSECTION POINT - 5/8" IRON PIPER WITH CAP PROVIDED; SEE DEED 75625
- 5 SET 1/2" CORNER - 1/2" IRON PIPER WITH CAP PROVIDED; SEE DEED 75625
- 6 CALCULATED POINT - BEARING SET
- 7 SECTIONAL BOUNDARY LINE
- 8 ROAD CENTER LINE
- 9 FENCE LINE
- 10 WATER LINE - 6" - 8" CITY EXPOSED @ EACH END
- 11 CANAL - 24" INCHES OR 24" EACH 6" INCH WATER OR AS SHOWN
- 12 10 FT WELLY HOLE ALIGNED TO P.L.
- 13 IRRIGATION PIPELINE ALIGNED TO P.L. EACH SIDE
- 14 DRAINAGE DITCH WATER LINE - 12" EACH SIDE LINE
- 15 6" IRON PIPE EXPOSED - LENGTH AND WIDTH AS SHOWN
- 16 SHEDDING STRUCTURE 10' x 10' WITH METAL ROOF STRUCTURE ON PAULI
- 17 LOT NUMBER



NOTES:
THIS PLAN IS SUBJECT TO ALL RECORDS AND SURVEYS MADE BY THE FOLLOWING OFFICE AND IS NOT TO BE REPRODUCED WITHOUT WRITTEN PERMISSION FROM THE ENGINEER.
THE ENGINEER HAS CONDUCTED VISUAL INSPECTIONS OF THE PROPERTY AND FOUND NO OBSTRUCTIONS TO THE SURVEY.
THE ENGINEER HAS CONDUCTED VISUAL INSPECTIONS OF THE PROPERTY AND FOUND NO OBSTRUCTIONS TO THE SURVEY.