



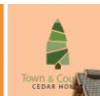
“Local Brokerage, National Results.”

Maps & Documents

Teton Valley Realty or this website makes no representation regarding sufficiency, completeness, or any other matters referred to any documents herein, or information provided on this web site. Teton Valley Realty advises you consult with independent legal counsel regarding these documents. When purchasing real estate, it is advised that you obtain full and complete documents, and not rely on these pages.

Phone: 208.354.2439
Email : info@tetonvalleyrealty.com

253 S. Main St. Box 604, Driggs ID 83422
57 S Main St. # 210 Victor, ID 83455

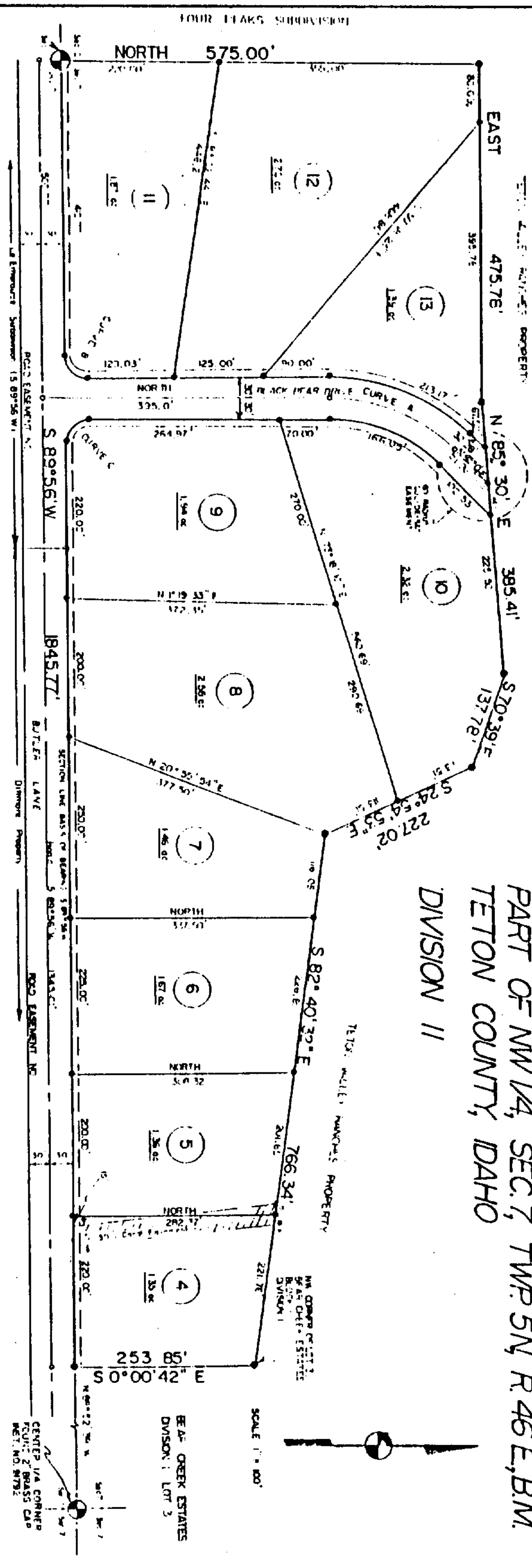


BEAR CREEK ESTATES

- BLOCK I -

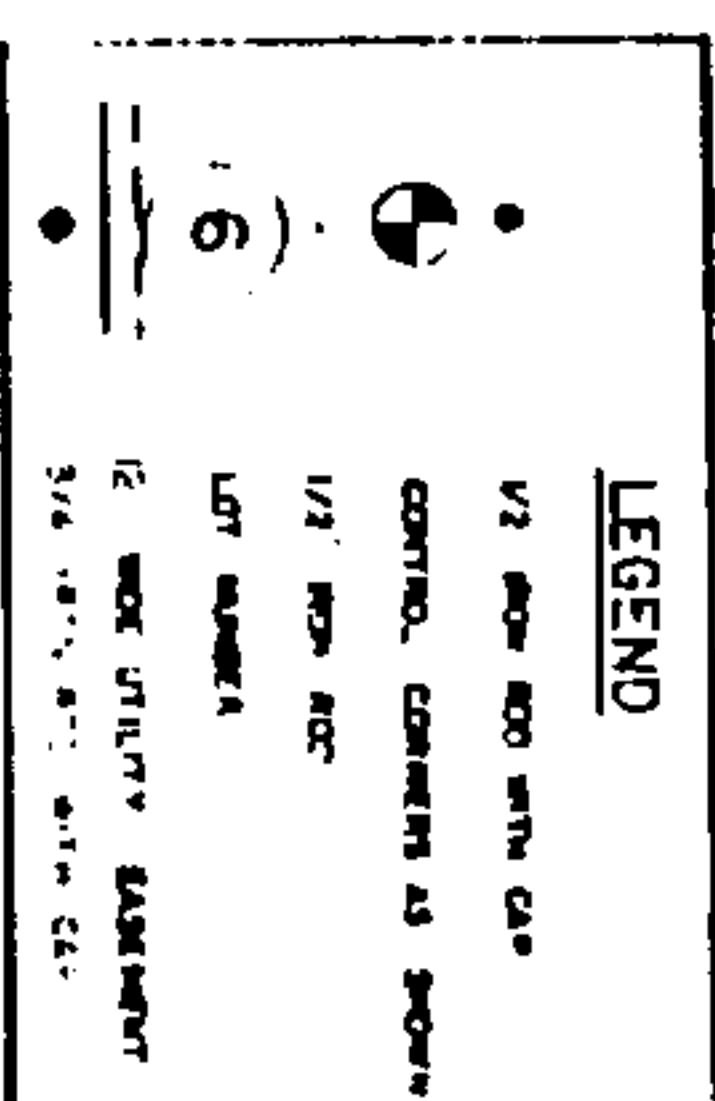
PART OF NW 1/4, SEC 7, TWP 5N, R. 46E, B.M.
TETON COUNTY, IDAHO

DIVISION II



PROPERTY DESCRIPTION
 BEAR CREEK ESTATES, DIVISION II, BLOCK I, PART OF NW 1/4, SEC 7, TWP 5N, R. 46E, B.M., TETON COUNTY, IDAHO. THIS PLAT IS A REVISION OF THE PLAT OF BEAR CREEK ESTATES, DIVISION I, BLOCK I, PART OF NW 1/4, SEC 7, TWP 5N, R. 46E, B.M., TETON COUNTY, IDAHO, FILED FOR RECORD IN TETON COUNTY, IDAHO, ON 10/15/85, INSTRUMENT NO. 97265. THIS PLAT IS A REVISION OF THE PLAT OF BEAR CREEK ESTATES, DIVISION I, BLOCK I, PART OF NW 1/4, SEC 7, TWP 5N, R. 46E, B.M., TETON COUNTY, IDAHO, FILED FOR RECORD IN TETON COUNTY, IDAHO, ON 10/15/85, INSTRUMENT NO. 97265. THIS PLAT IS A REVISION OF THE PLAT OF BEAR CREEK ESTATES, DIVISION I, BLOCK I, PART OF NW 1/4, SEC 7, TWP 5N, R. 46E, B.M., TETON COUNTY, IDAHO, FILED FOR RECORD IN TETON COUNTY, IDAHO, ON 10/15/85, INSTRUMENT NO. 97265.

CERTIFICATE OF OWNERS
 WE, THE UNDERSIGNED, THE OWNERS OF THE ABOVE DESCRIBED PROPERTY, HEREBY CERTIFY THAT THE SAID PROPERTY IS NOT SUBJECT TO ANY EASEMENTS, ENCUMBRANCES, OR OTHER INTERESTS, AND THAT WE HAVE FULL TITLE TO THE SAID PROPERTY.



ACKNOWLEDGEMENT
 TETON VALLEY ENGINEERS, INC. 10000
 HENRY, GEORGE HENRY

ENGINEER/SURVEYOR
 A-W ENGINEERING, VICTOR, IDAHO
 OWNER

DATE	BY	REMARKS
10/15/85	George Henry	FILED FOR RECORD
10/15/85	Victor	FILED FOR RECORD

TREASURER'S CERTIFICATE
 HEREBY CERTIFY THAT ALL TAXES DUE HAVE BEEN PAID ON THE
 TRACT OF LAND SHOWN ON THIS PLAT.
 DATE: 10/15/85
 COUNTY TREASURER

ASSESSOR'S CERTIFICATE
 HEREBY CERTIFY ON THE FOLLOWING
 TRACT OF LAND SHOWN ON THIS PLAT
 FOR APPROVAL AND ACCEPTANCE.
 DATE: 10/15/85
 COUNTY ASSESSOR

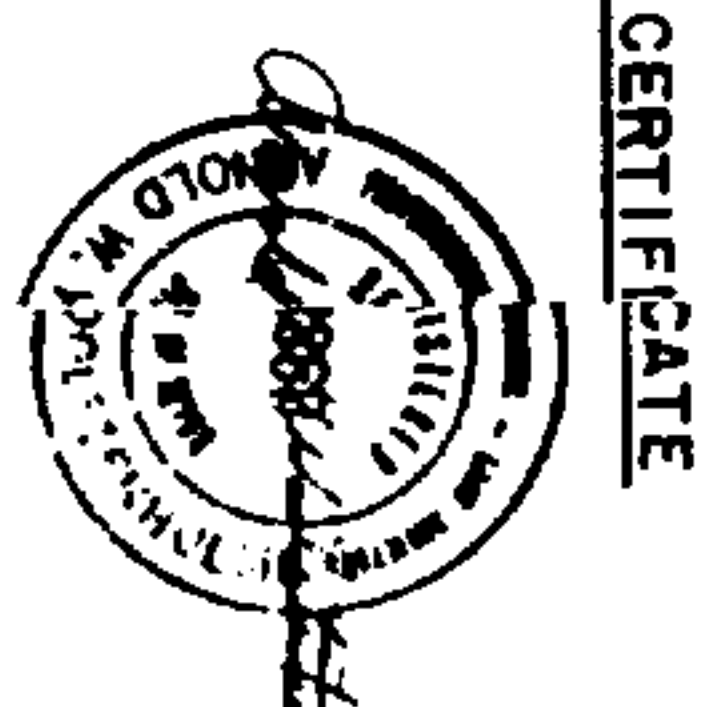
COUNTY ENGINEER'S CERTIFICATE
 HEREBY CERTIFY THAT I HAVE CHECKED THIS PLAT AND
 THAT IT COMPLIES WITH THE STATE OF IDAHO CODE
 RELATING TO PLATS AND SURVEYS.
 DATE: 10/15/85
 COUNTY ENGINEER

PLANNING & ZONING APPROVAL
 PRESENTED TO THE TETON COUNTY PLANNING AND ZONING
 COMMISSION ON THE FOLLOWING DATE AT WHICH TIME THE
 SUBDIVISION WAS APPROVED AND ACCEPTED.
 DATE: 10/15/85
 CHAIRMAN

COMMISSIONERS' CERTIFICATE
 AT THE REQUEST OF
 INSTRUMENT NO. 97265

RECORDER'S CERTIFICATE
 STATE OF IDAHO
 COUNTY OF TETON
 I DO HEREBY CERTIFY THAT THIS PLAT WAS FILED THIS
 DAY OF OCTOBER, 1985.

HEALTH DEPT. CERTIFICATE
 I HEREBY CERTIFY THAT THE SANITARY RESTRICTIONS REQUIRED BY BOARD CODE
 TITLE 20 CHAPTER 10, SECTION 20-101, HAVE BEEN SATISFIED AND THIS
 PLAT IS HEREBY APPROVED FOR RECORDING BY FILING OF THIS CERTIFICATE.
 SUBJECT TO THE CONDITION THAT SEWER DISPOSAL, ABSORPTION AREA
 DEPTH MAY NOT EXCEED 24" BELOW THE EXISTING FINISH SURFACE.
 DATE: 10/15/85
 COUNTY HEALTH DEPT.



BEAR CREEK ESTATES DIVISION II
 A-W ENGINEERING, VICTOR, IDAHO
 CHAIRMAN, COUNTY COMMISSIONERS

BEAR CREEK ESTATES DIVISION II
 A-W ENGINEERING, VICTOR, IDAHO
 COUNTY RECORDER

BEAR CREEK ESTATES DIVISION II
 A-W ENGINEERING, VICTOR, IDAHO
 COUNTY RECORDER