



“Local Brokerage, National Results.”

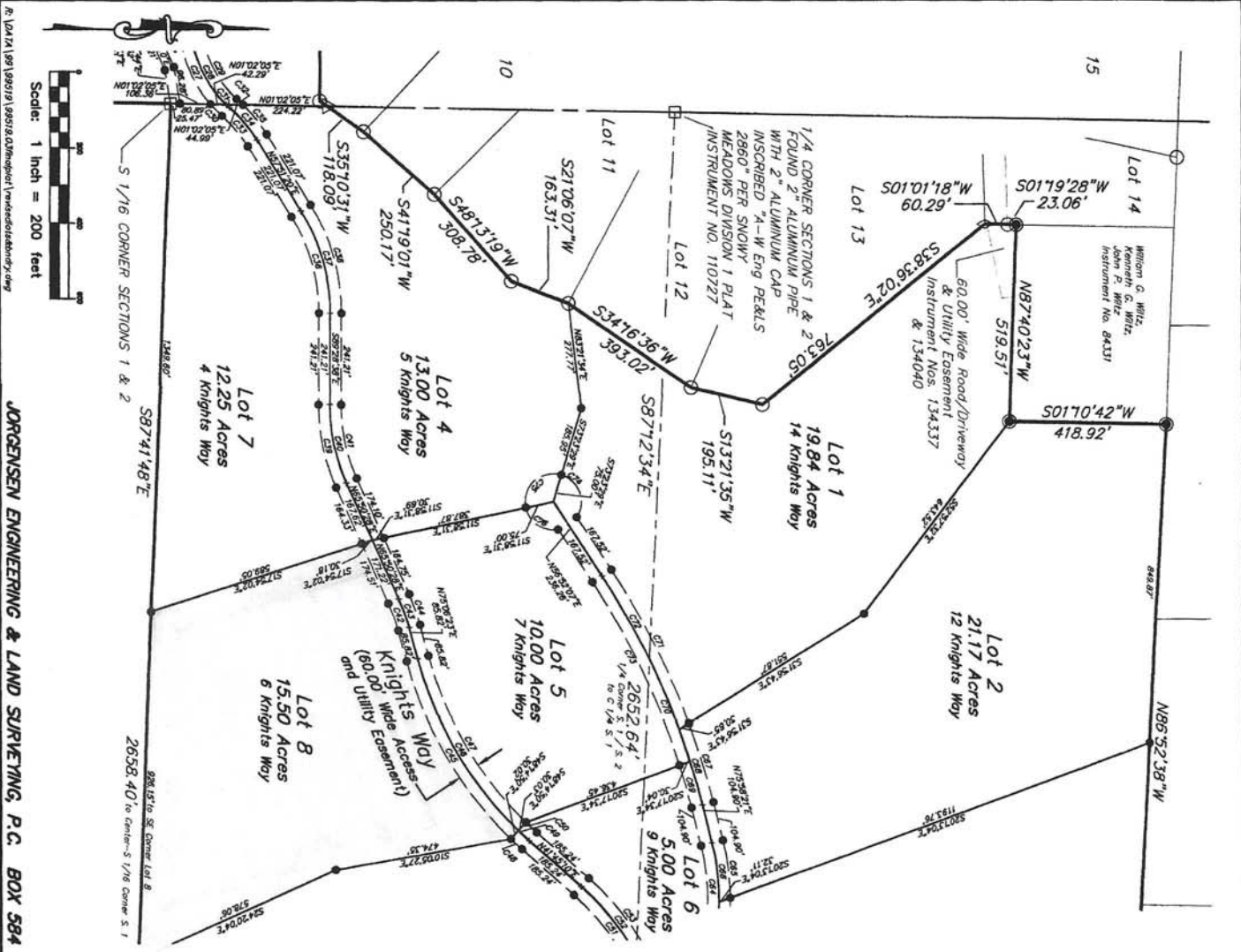
Maps & Documents

Teton Valley Realty or this website makes no representation regarding sufficiency, completeness, or any other matters referred to any documents herein, or information provided on this web site. Teton Valley Realty advises you consult with independent legal counsel regarding these documents. When purchasing real estate, it is advised that you obtain full and complete documents, and not rely on these pages.

Phone: 208.354.2439
Email : info@tetonvalleyrealty.com

253 S. Main St. Box 604, Driggs ID 83422
57 S Main St. # 210 Victor, ID 83455





LEGEND

- + Calculated point, no monument found or set. Used only where needed for drawing clarity
- ◇ 1/2" rebar, without cap, found this survey
- △ 3/8" rebar with 2" aluminum cap, notched "JORGENSEN ENG & LS PAS (2880)" cap found this survey
- Section corner found this survey as noted
- Survey Measurers Station/Marker record monument found this survey
- Rebar with AIW Engineering (2880) cap found this survey
- 3/8" x 24" rebar with 2" diameter aluminum cap notched "JORGENSEN ENG & LS PAS (2880)" to be set this survey by November 30, 2002
- Boundary Badger Creek Ranch
- - - Let lines with Badger Creek Ranch
- - - Adjacent property line
- - - Easement line

CURVE TABLE

CURVE	BEARING	ARC LENGTH	DELTA ANGLE	CHORD LENGTH	CHORD BEARING
C1	S89°32'09"E	30.00'	41.69°	39.97'	S17°21'18"W
C2	S89°32'09"E	30.00'	41.69°	39.97'	S17°21'18"W
C3	S89°32'09"E	30.00'	41.69°	39.97'	S17°21'18"W
C4	S89°32'09"E	30.00'	41.69°	39.97'	S17°21'18"W
C5	S89°32'09"E	30.00'	41.69°	39.97'	S17°21'18"W
C6	S89°32'09"E	30.00'	41.69°	39.97'	S17°21'18"W
C7	S89°32'09"E	30.00'	41.69°	39.97'	S17°21'18"W
C8	S89°32'09"E	30.00'	41.69°	39.97'	S17°21'18"W
C9	S89°32'09"E	30.00'	41.69°	39.97'	S17°21'18"W
C10	S89°32'09"E	30.00'	41.69°	39.97'	S17°21'18"W
C11	S89°32'09"E	30.00'	41.69°	39.97'	S17°21'18"W
C12	S89°32'09"E	30.00'	41.69°	39.97'	S17°21'18"W
C13	S89°32'09"E	30.00'	41.69°	39.97'	S17°21'18"W
C14	S89°32'09"E	30.00'	41.69°	39.97'	S17°21'18"W
C15	S89°32'09"E	30.00'	41.69°	39.97'	S17°21'18"W
C16	S89°32'09"E	30.00'	41.69°	39.97'	S17°21'18"W
C17	S89°32'09"E	30.00'	41.69°	39.97'	S17°21'18"W
C18	S89°32'09"E	30.00'	41.69°	39.97'	S17°21'18"W
C19	S89°32'09"E	30.00'	41.69°	39.97'	S17°21'18"W
C20	S89°32'09"E	30.00'	41.69°	39.97'	S17°21'18"W
C21	S89°32'09"E	30.00'	41.69°	39.97'	S17°21'18"W
C22	S89°32'09"E	30.00'	41.69°	39.97'	S17°21'18"W
C23	S89°32'09"E	30.00'	41.69°	39.97'	S17°21'18"W
C24	S89°32'09"E	30.00'	41.69°	39.97'	S17°21'18"W
C25	S89°32'09"E	30.00'	41.69°	39.97'	S17°21'18"W
C26	S89°32'09"E	30.00'	41.69°	39.97'	S17°21'18"W
C27	S89°32'09"E	30.00'	41.69°	39.97'	S17°21'18"W
C28	S89°32'09"E	30.00'	41.69°	39.97'	S17°21'18"W
C29	S89°32'09"E	30.00'	41.69°	39.97'	S17°21'18"W
C30	S89°32'09"E	30.00'	41.69°	39.97'	S17°21'18"W
C31	S89°32'09"E	30.00'	41.69°	39.97'	S17°21'18"W
C32	S89°32'09"E	30.00'	41.69°	39.97'	S17°21'18"W
C33	S89°32'09"E	30.00'	41.69°	39.97'	S17°21'18"W
C34	S89°32'09"E	30.00'	41.69°	39.97'	S17°21'18"W
C35	S89°32'09"E	30.00'	41.69°	39.97'	S17°21'18"W
C36	S89°32'09"E	30.00'	41.69°	39.97'	S17°21'18"W
C37	S89°32'09"E	30.00'	41.69°	39.97'	S17°21'18"W
C38	S89°32'09"E	30.00'	41.69°	39.97'	S17°21'18"W
C39	S89°32'09"E	30.00'	41.69°	39.97'	S17°21'18"W
C40	S89°32'09"E	30.00'	41.69°	39.97'	S17°21'18"W
C41	S89°32'09"E	30.00'	41.69°	39.97'	S17°21'18"W
C42	S89°32'09"E	30.00'	41.69°	39.97'	S17°21'18"W
C43	S89°32'09"E	30.00'	41.69°	39.97'	S17°21'18"W
C44	S89°32'09"E	30.00'	41.69°	39.97'	S17°21'18"W
C45	S89°32'09"E	30.00'	41.69°	39.97'	S17°21'18"W
C46	S89°32'09"E	30.00'	41.69°	39.97'	S17°21'18"W
C47	S89°32'09"E	30.00'	41.69°	39.97'	S17°21'18"W
C48	S89°32'09"E	30.00'	41.69°	39.97'	S17°21'18"W
C49	S89°32'09"E	30.00'	41.69°	39.97'	S17°21'18"W
C50	S89°32'09"E	30.00'	41.69°	39.97'	S17°21'18"W
C51	S89°32'09"E	30.00'	41.69°	39.97'	S17°21'18"W
C52	S89°32'09"E	30.00'	41.69°	39.97'	S17°21'18"W
C53	S89°32'09"E	30.00'	41.69°	39.97'	S17°21'18"W
C54	S89°32'09"E	30.00'	41.69°	39.97'	S17°21'18"W
C55	S89°32'09"E	30.00'	41.69°	39.97'	S17°21'18"W
C56	S89°32'09"E	30.00'	41.69°	39.97'	S17°21'18"W
C57	S89°32'09"E	30.00'	41.69°	39.97'	S17°21'18"W
C58	S89°32'09"E	30.00'	41.69°	39.97'	S17°21'18"W
C59	S89°32'09"E	30.00'	41.69°	39.97'	S17°21'18"W
C60	S89°32'09"E	30.00'	41.69°	39.97'	S17°21'18"W
C61	S89°32'09"E	30.00'	41.69°	39.97'	S17°21'18"W
C62	S89°32'09"E	30.00'	41.69°	39.97'	S17°21'18"W
C63	S89°32'09"E	30.00'	41.69°	39.97'	S17°21'18"W
C64	S89°32'09"E	30.00'	41.69°	39.97'	S17°21'18"W
C65	S89°32'09"E	30.00'	41.69°	39.97'	S17°21'18"W
C66	S89°32'09"E	30.00'	41.69°	39.97'	S17°21'18"W
C67	S89°32'09"E	30.00'	41.69°	39.97'	S17°21'18"W
C68	S89°32'09"E	30.00'	41.69°	39.97'	S17°21'18"W
C69	S89°32'09"E	30.00'	41.69°	39.97'	S17°21'18"W
C70	S89°32'09"E	30.00'	41.69°	39.97'	S17°21'18"W
C71	S89°32'09"E	30.00'	41.69°	39.97'	S17°21'18"W
C72	S89°32'09"E	30.00'	41.69°	39.97'	S17°21'18"W
C73	S89°32'09"E	30.00'	41.69°	39.97'	S17°21'18"W
C74	S89°32'09"E	30.00'	41.69°	39.97'	S17°21'18"W
C75	S89°32'09"E	30.00'	41.69°	39.97'	S17°21'18"W
C76	S89°32'09"E	30.00'	41.69°	39.97'	S17°21'18"W
C77	S89°32'09"E	30.00'	41.69°	39.97'	S17°21'18"W
C78	S89°32'09"E	30.00'	41.69°	39.97'	S17°21'18"W
C79	S89°32'09"E	30.00'	41.69°	39.97'	S17°21'18"W
C80	S89°32'09"E	30.00'	41.69°	39.97'	S17°21'18"W

FINAL PLAN
BADGER CREEK RANCH
 BEING PORTIONS OF THE
 S1/2NW1/4 & N1/2SW1/4 SECTION 1
 AND PORTIONS OF THE
 SE1/4 SECTION 2
 T6 N., R46 E., B.M., TETON COUNTY, IDAHO

OWNER =
 Knights Ranch, L.L.P.
 498 Hoffman Avenue
 San Francisco, CA 94114

Prepared by: JORGENSEN ENGINEERING & LAND SURVEYING, P.C. BOX 584 DRIGGS, IDAHO 83422 (208)354-8330

Scale: 1 inch = 200 feet

DETAILED MAP LOTS 1, 4, 5, & 7

Sheet 3 of 5

Instrument # 142528
 Darius, TETON COUNTY
 2001-01-11 for: KNIGHTS RANCH
 WOLAN G. BOYLE
 E. Carlos Beckner
 1/11/01