



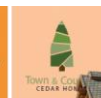
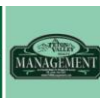
**“Local Brokerage, National Results.”**

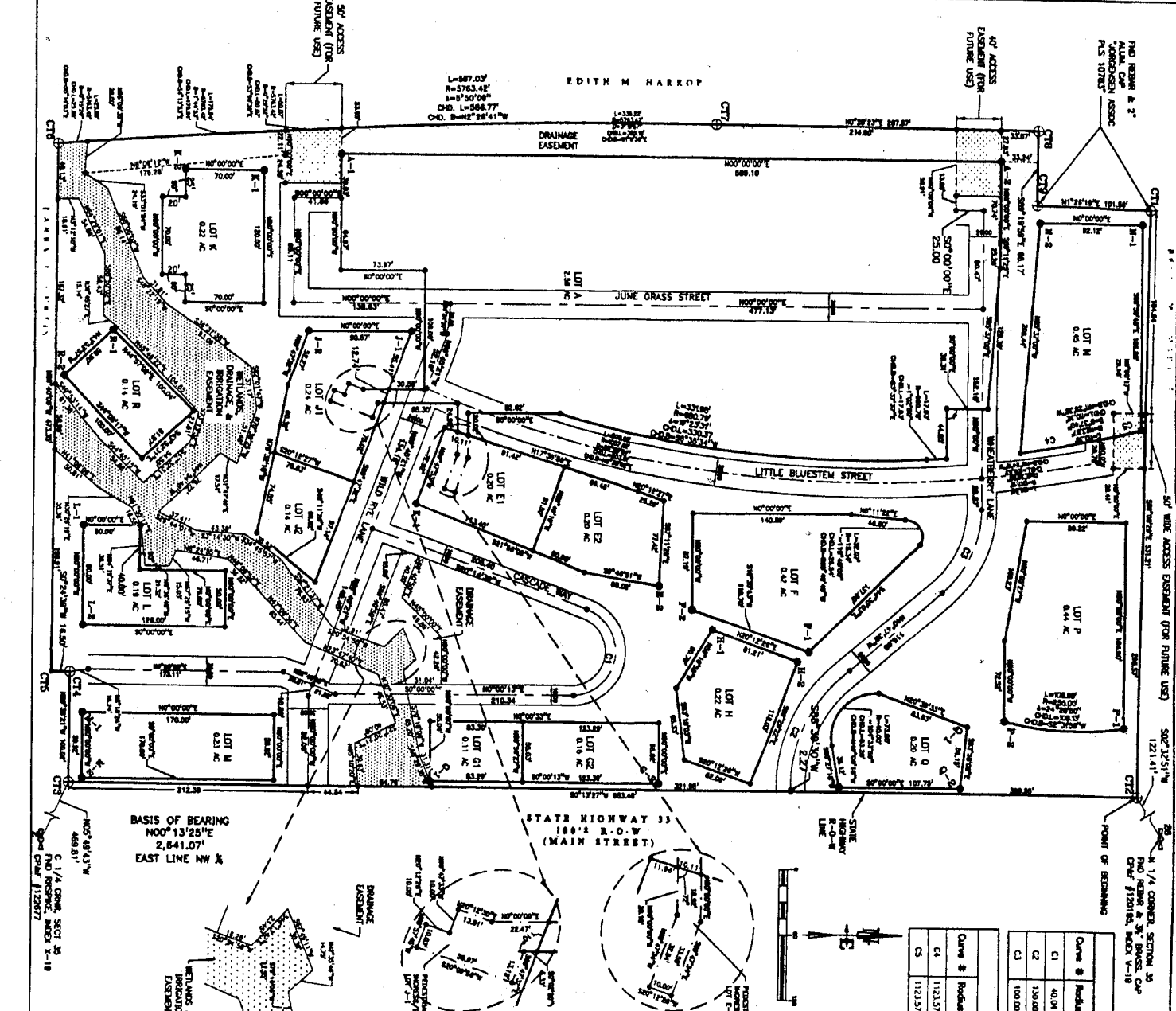
## Maps & Documents

Teton Valley Realty or this website makes no representation regarding sufficiency, completeness, or any other matters referred to any documents herein, or information provided on this web site. Teton Valley Realty advises you consult with independent legal counsel regarding these documents. When purchasing real estate, it is advised that you obtain full and complete documents, and not rely on these pages.

Phone: 208.354.2439  
Email : info@tetonvalleyrealty.com

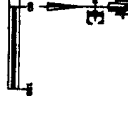
253 S. Main St. Box 604, Driggs ID 83422  
57 S Main St. # 210 Victor, ID 83455





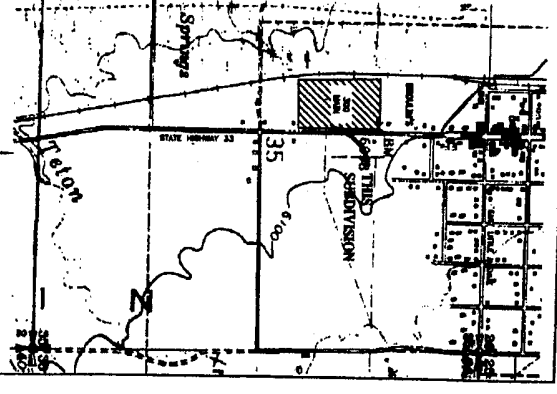
BASIS OF BEARING  
 N00°13'25"E  
 2,641.07'  
 EAST LINE NW 1/4

STATE HIGHWAY 33  
 100'S R-O-W  
 (MAIN STREET)



Curve #	Radius	Length	Delta	Chord Bearing	Chord Length
C1	40.04	11.84	159°43'34"	N79°22'34"W	78.83
C2	130.00	14.69	50°32'33"	S67°04'03"W	111.01
C3	100.00	15.88	48°12'25"	S63°33'47"W	123.77

Lot	Area	Dimensions	Length
C1	40.04	11.84 x 15.88	78.83
C2	130.00	14.69 x 11.84	111.01
C3	100.00	15.88 x 14.69	123.77
C4	112.57	11.39 x 17.91	89.82
C5	112.57	15.87 x 17.91	89.81



**LEGEND**

- SITE BOUNDARY
- ROAD CENTER LINE
- EDGE OF ROAD
- EASEMENT FOR FUTURE USE
- EAST LINE OF NW 1/4 SEC. 35
- JUNCTIONAL WETLANDS
- DRAINAGE EASEMENT
- FUTURE USE ACCESS EASEMENT
- PROPERTY CORNER (BY BEARING AND DISTANCE UNLESS NOTED OTHERWISE)
- SECTION CORNER AS NOTED
- SET 1/2" BEARING BY ALUMINUM CAP
- SET 1/4" BEARING BY ALUMINUM CAP
- SET 1/8" BEARING BY ALUMINUM CAP
- SET 1/16" BEARING BY ALUMINUM CAP

**300 MAIN**  
 a subdivision located in the  
 Township 5 S., Range 46 E., B.M.,  
 City of DeWitt,  
 DeWitt County, Illinois

**OWNER:**  
 TC HORIZON, LLC  
 PO BOX 604  
 253 SOUTH MAIN STREET  
 DEWITT, ILLINOIS 62422  
 (208) 354-2439

**ENGINEER & SURVEYOR:**  
 NELSON ENGINEERING  
 30 N. 1st EAST  
 DEWITT, IL 62422  
 (208) 354-2087

DESIGNED BY: ME DRAWN BY: ME PROJECT NO. 05-0020 DATE: 4-2-20

